



GMT MONTHLY MEMBERSHIP PROGRESS REPORT

Results as of: 9/30/2019

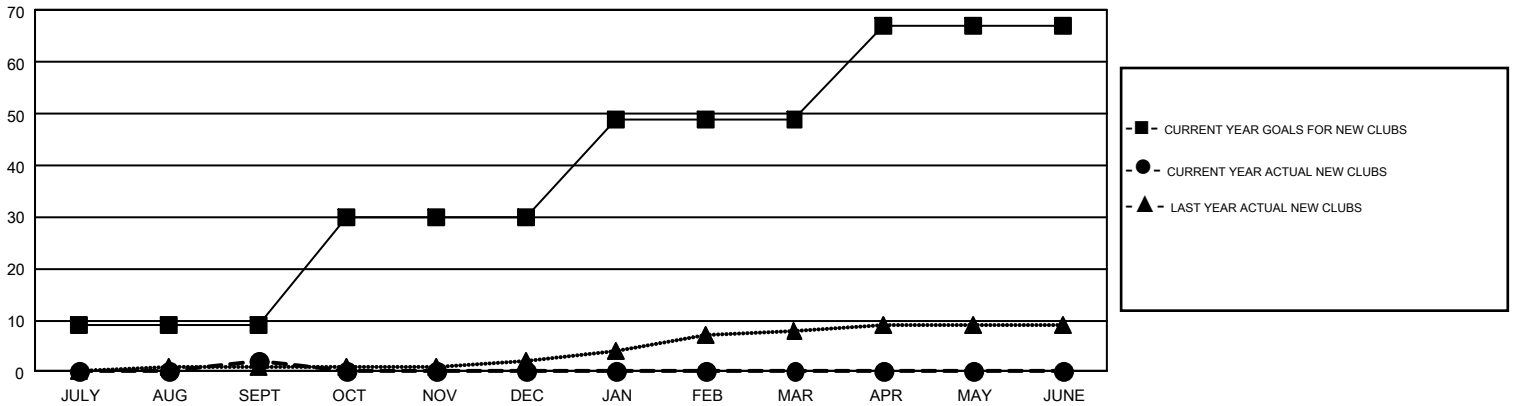
GAT Constitutional Area 5 - Japan

REPORT DOES NOT INCLUDE CLUBS IN UNDISTRICTED AREAS.

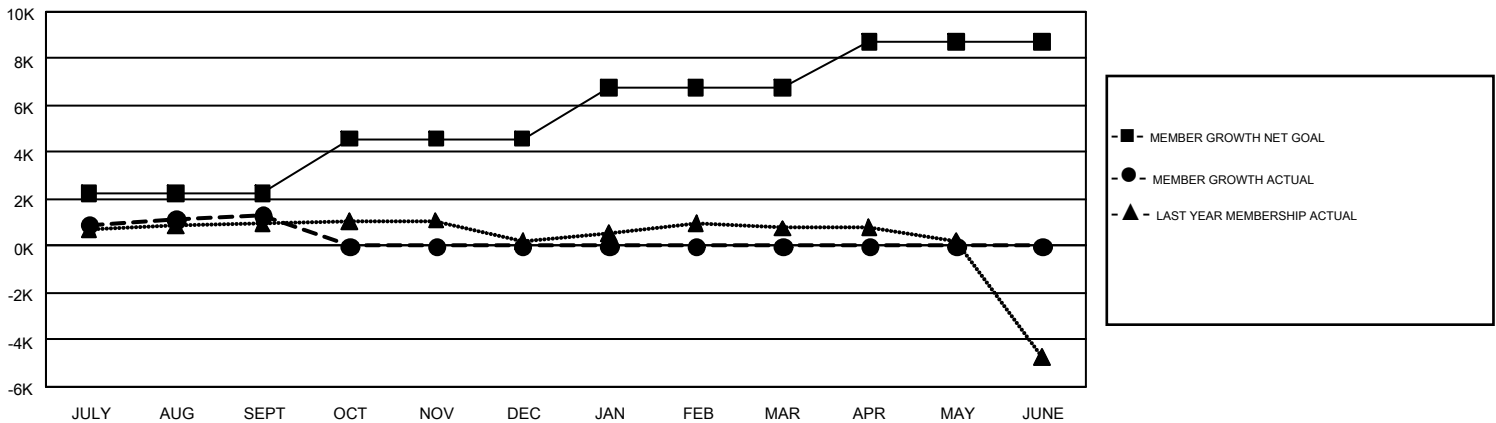
Clubs			
RESULTS FOR 2019-2020			
QUARTER	NEW CLUB GOAL	NEW CLUBS	DROPPED CLUBS
JULY/AUG/SEPT	9	2	6
OCT/NOV/DEC	21	0	0
JAN/FEB/MAR	19	0	0
APR/MAY/JUNE	18	0	0

Members			
RESULTS FOR 2019-2020			
QUARTER	MEMBER GROWTH NET GOAL	MEMBER GROWTH ACTUAL	DROPPED MEMBERS ACTUAL (including transfers)
JULY/AUG/SEPT	2230	3,323	1,808
OCT/NOV/DEC	2353	0	0
JAN/FEB/MAR	2172	0	0
APR/MAY/JUNE	1948	0	0

GOALS AND ACTUAL NEW CLUBS CUMULATIVE



GOALS AND ACTUAL MEMBERS CUMULATIVE



DROPPED CLUBS: 6	1,415 CLUBS OF 2,963 ADDED 1 OR MORE NEW MEMBERS	GENDER DISTRIBUTION MALE 84,911 (75.88%) FEMALE 26,986 (24.12%)
DROPPED MEMBERS DECEASED 198 CLUB CANCELLED 35 OTHER 1,575 TOTAL 1,808	CLICK HERE FOR CUMULATIVE MEMBERSHIP DATA	TOTAL FAMILY UNIT MEMBERS 42,030 FAMILY MEMBERS PAYING HALF DUES 22,937